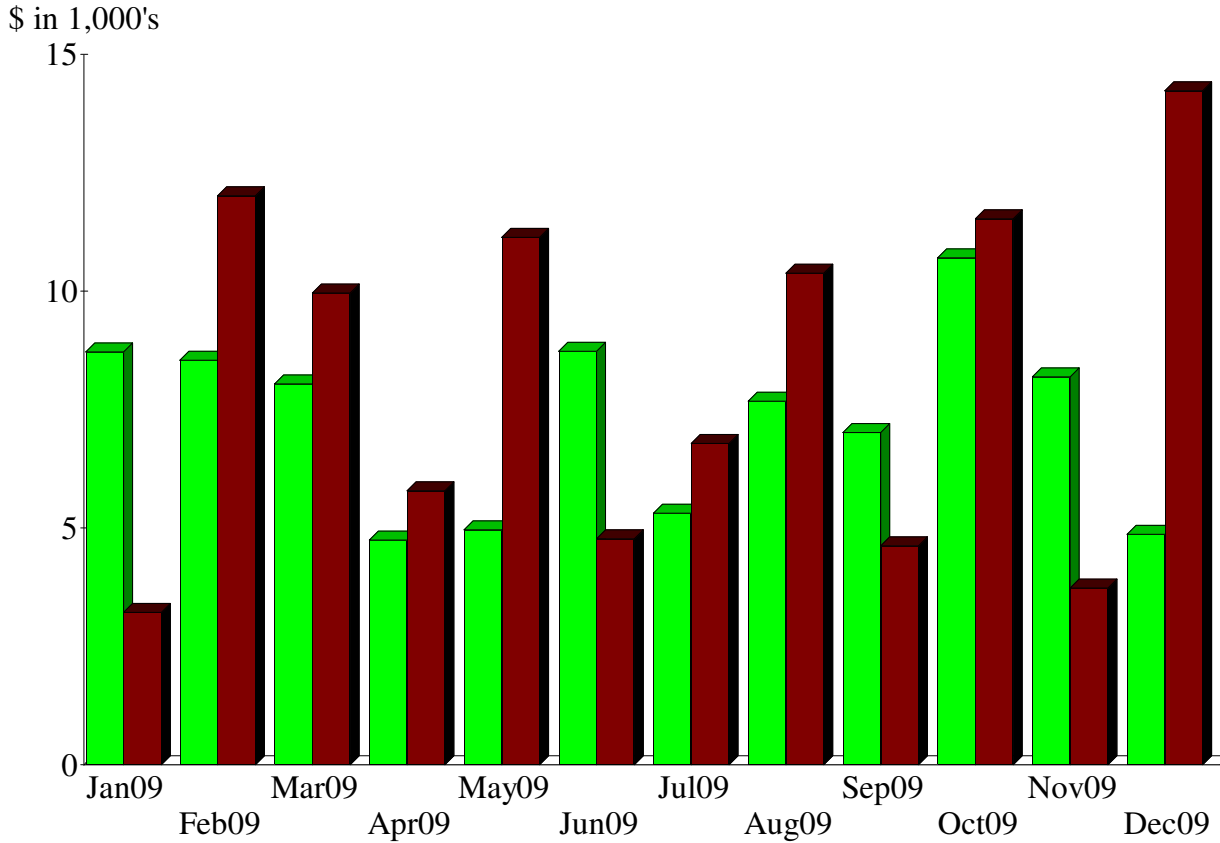
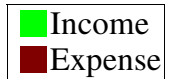
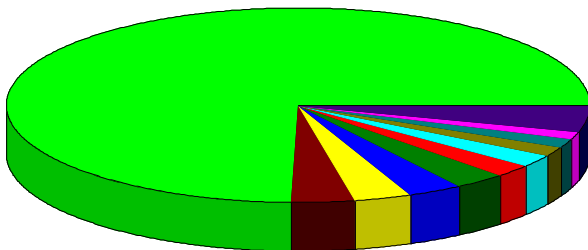


Income and Expense by Month
January through December 2009



Expense Summary
January through December 2009

540 · Veterinary Expenses	%74.67
610 · Taxes Paid	3.50
580 · Fundraising Expense	3.20
520 · Collars, Leashes, Tags	3.18
510 · Food	2.87
550 · General Supplies/Animal	2.16
525 · Toys & Go Home	2.10
430.1 · Grant Expenditures	1.68
8100 · Non-personnel expenses (header)	1.49
560 · Transportation/Animal	1.40
Other	3.76
Total	\$98,216.15



By Account